

2008 International Conference on Rock Magnetism

Julie Bowles IRM

Spring in Corsica is beautiful, and the success of the 2008 International Conference on Rock Magnetism (June 2 – 8) was evidenced by the fact that over 100 scientists chose to spend those beautiful days inside a dark conference room, discussing the latest research in rock magnetism. Held at the beautiful *Institute d'Études Scientifiques de Cargèse*, the meeting was designed in part as a celebration of the career of Subir Banerjee, founder of both the IRM and the Santa Fe Conference series. The wide range of research discussed reflected that encompassed by Subir's career, an overview of which was provided as a conference kick-off by Bruce Moskowitz. Starting with his first published paper in 1960 in the field of seismology and spanning everything from mineral physics and magnetism to lunar paleointensity to environmental magnetism and nanobiogeomagnetism, Subir has made fundamental contributions to each of the sub-disciplines represented by the sessions at Cargèse.

This summary cannot possibly cover all the excellent science presented at the meeting, but will try to give a feel for the amazing breadth of topics covered. That breadth may have been the single most impressive aspect of the meeting. Where else can a single discipline also make contributions to paleoclimatology, environmental science, tectonics, planetary science, chemistry, physics, and biology?

The entire program and abstract volume can be downloaded from the conference website (www.irm.umn.edu/Cargese/).



The courtyard of the beautiful Institute d'Études Scientifiques de Cargèse, filled with happy rock magnetists. (Photo courtesy of Steve Constable.)

Rock and Mineral Magnetism

The first morning featured two companion talks given by Suzanne McEnroe et al. and Dave Dunlop and Özden Özdemir on open questions and challenges in mineral (McEnroe) and rock (Dunlop/Özdemir) magnetism. McEnroe discussed some unanswered questions, including the age and source of magnetism in the ocean crust; the source of continental deep-crustal anomalies; and temperature and pressure effects on mineral exsolution systems. Exciting new research bearing on these (and many other) questions is being carried out at the intersection of rock and mineral magnetism with numerical modeling, laboratory synthesis and new magnetic microscopy and micro-analytical techniques that allow us to address problems at a scale not previously possible. Dunlop and Özdemir focused on open questions related to remanence acquisition; low-temperature transitions and “transition remanence”; poorly-understood behavior at the SD-2D transition; and the interpretation of grain-size distributions and mixtures on Day plots. McEnroe further pointed out that in addition to fundamental scientific challenges, we also face funding challenges – and opportunities. She suggests developing community-based projects or strategies as an approach to exploit potential funding sources.

Early results were presented on two efforts to use precisely synthesized material to study magnetostatic and coupled/exchanged interactions. Maike Lübbe, Michael Winklhofer et al. described a controlled laboratory synthesis of hematite-ilmenite multilayers, designed to understand the effect of layer thickness on the properties of lamellar magnetism. Wyn Williams et al. presented early results from the synthesis of precise nano-particle

*cont'd. on
p. 9...*

Visiting Fellows' Reports

FORC diagrams and low-temperature measurements of biogenic and non-biogenic magnetites

Claire Carvallo
IMPMC, Université Pierre et Marie Curie
carvallo@impmc.jussieu.fr

Part 1: Formation of magnetite in cultured *Magnetospirillum gryphiswaldense*

The first set of samples was provided by Damien Faivre from the University of Bremen and consisted of cultured *Magnetospirillum gryphiswaldense* at various stages of their development. They were grown following an assay in which the iron uptake is used only for magnetite formation and not for cell growth. This enabled me to follow the magnetite formation independently from growth.

I measured room-temperature FORC diagrams for

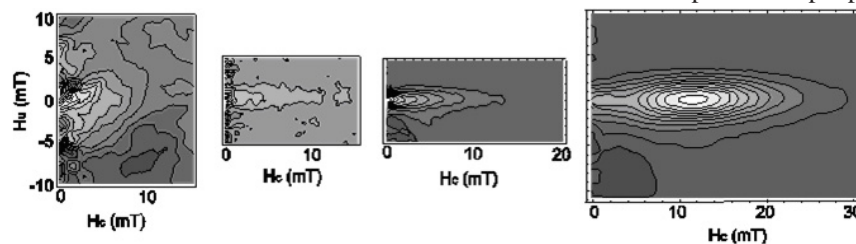
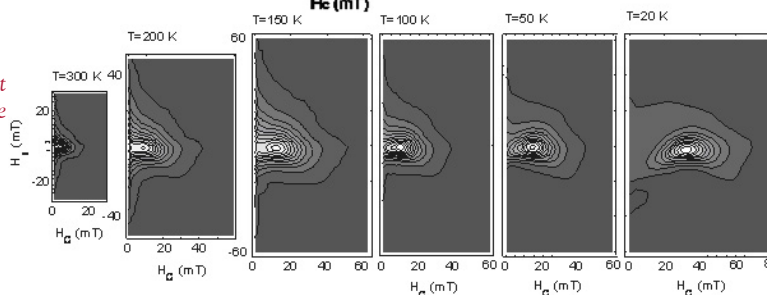


Figure 1: FORC diagrams of the time-course series of *M. gryphiswaldense* after: a: 1h30; b: 3h; c: 5h; d: 8h in the growth medium. The 4 FORC diagrams are at the same scale. SF=4.

Figure 2: Top: FORC diagrams measured at different temperatures, for a magnetite sample produced with the abiotic method. SF=2.



Direct measurement of hematite individual particle anisotropy using thermal fluctuation tomography: comparison to other techniques and implications for inclination shallowing in red bed DRMs

Dario Bilardello
Lehigh University
dabc@lehigh.edu

Methods to correct for the observed inclination shallowing in sedimentary rocks have been proposed that are based on either models of the geomagnetic field (Tauxe and Kent, 2004; Kent and Tauxe, 2005) or on magnetic

samples that had spent respectively 2, 3, 5 and 8 hours in their growth medium. According to what TEM images had previously shown, the FORC diagrams show a very clear evolution from a mainly superparamagnetic (SP) (though very noisy) pattern to a mainly single-domain (SD) pattern, but still containing some SP particles.

Part 2: Magnetic characterization of biotic and abiotic nanomagnetite

The second set of samples were nanomagnetites chemically produced from lepidocrocite and nanomagnetite biogenically produced by the iron-reducing bacterium *Shewanella putrefaciens*. The main goal of this study was to look at differences between the magnetic properties of the two kinds of samples by various methods, including X-ray spectroscopy methods and FORC diagrams. Since the particles were mainly SP at room temperature, the FORC measurements had to be done at low temperature (down to 20 K). Both samples had very similar FORC diagrams, SP-like as expected. The progressive blocking of the magnetization when the temperature is decreased is easily seen on the FORC diagrams (Fig.2), and could be used to determine the grain size distribution.

Thanks very much to Mike, Peat and Brian for the technical help, and to Thelma, Amy and Ioan for their help with sample preparation.

anisotropy (Jackson et al., 1991; Tan and Kodama, 2003). One limitation of the anisotropy method has been the isolation and determination of the magnetic carrier's individual particle anisotropy (a factor). Our red bed inclination shallowing corrections of the Carboniferous Shepody Fm. of New Brunswick and Nova Scotia have been dependent on estimates of hematite's individual particle anisotropy using data fit to theoretical correction curves and by spatial analysis of the distribution of corrected paleomagnetic directions and poles. We have also developed a technique for extracting the magnetic mineralogy in a sample and preferentially make a direct measure of individual particle anisotropy of specular hematite. Measured values are consistent with our previous estimates.

In order to improve our understanding of red bed DRMs and inclination shallowing, I went to the IRM in

the attempt to apply the thermal fluctuation tomography technique of Jackson et al. (2006) to measure hematite's particle anisotropy in red beds. Application of the technique has requirements that aren't strictly met by most red bed formations. Most importantly, a single magnetic mineralogy is required, while the Shepody Fm. red beds contain a mixed magnetic mineralogy of specular hematite, magnetite, maghemite, goethite and pigmentary hematite, as indicated by IRM acquisition modeling and thermal demagnetization of three orthogonal IRMs. Thermal fluctuation tomography also requires high temperature measurements, which pose the problem of thermochemical alteration at the required Néel temperatures. In view of these complications, the challenge was to work through some of the steps towards a quantitative estimate of particle anisotropy.

Focus was placed on magnetic separates in an attempt to limit the effects of thermochemical alteration. Rock-magnetic measurements were compared to those performed on whole-rock samples. High temperature hysteresis loops performed on the high-temperature vibrating sample magnetometer (VSM) and high temperature susceptibility measurements performed on the high-temperature kappabridge suggest that magnetic separates start altering at higher temperatures than whole rock samples (~550°C as opposed to ~450°C), making them potentially more useful for thermal fluctuation tomography. Heating and cooling sweeps between 20 K and 300 K performed on an MPMS show smoother signals from the magnetic separates. The contribution of hematite in separates, however, is extremely low and appears to have been dampened by the extraction process, which preferentially selects magnetite. The presence of goethite is also suggested.

As a combination of the thermal alteration observed and the mixed mineralogy present in the samples, together with the very weak hematite signal obtained from the separates, attempts at thermal fluctuation tomography modeling gave very poor results. While at the IRM, however, I was able to make important measurements on the VSM and MPMS that helped me further characterize the mineralogies and properties of a broader collection of red bed samples from the Maritime Provinces of Canada, including FORC diagrams. These results have unequivocally proven the presence of primary magnetite in red beds whose primary remanence is carried by specularite (Shepody Fm) and in red beds whose remanence is carried by magnetite with secondary chemically grown hematite present (Deer Lake Group, Newfoundland).

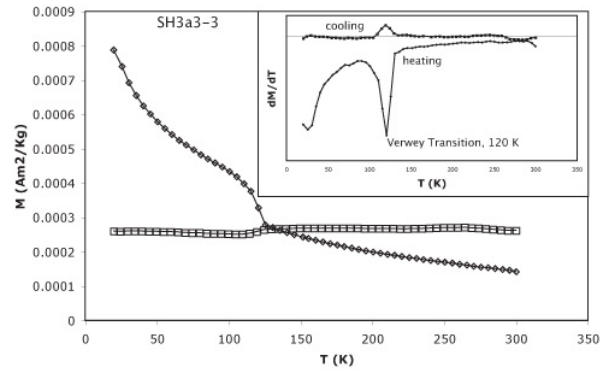


Figure 1: Low temperature MPMS, heating and cooling curves between 20 K and 300 K of a whole rock specimen of the Shepody Fm. whose characteristic remanence is carried specular hematite, showing a very strong magnetite signal. The inset shows the derivative of the curves with the Verwey transition indicated.

My time at the IRM was a great learning experience and I am grateful to all the IRM staff for the opportunity I was offered and for the generous help and expertise provided.

References:

- Jackson, M., Banerjee, S. K., Marvin, J.A., Lu, R. & Gruber, W., 1991. Detrital remanence inclination errors and anhysteretic remanence anisotropy: quantitative model and experimental results. *Geophys. J. Int.*, 104, 95-103.
- Jackson, M., Carter-Stiglitz, B., Egli, R., and Solheid, P., 2006. Characterizing the superparamagnetic grain distribution $f(V, H_k)$ by thermal fluctuation tomography. *J. Geophys. Res.*, 111, B12S07. doi:10.1029/2006JB004514.
- Kent, D.V., and Tauxe, L., 2005. Corrected late Triassic latitudes for continents adjacent to the North Atlantic. *Science*, 307, 240-244.
- Tan, X. and Kodama, K. P., 2003. An analytical solution for correcting paleomagnetic inclination error. *Geophys. J. Int.*, 152, 228-236.
- Tauxe, L. and Kent, D. V., 1984. Properties of a detrital remanence carried by hematite from study of modern river deposits and laboratory redeposition experiments. *Geophys. J. R. Astron. Soc.*, 77, 543-561.
- Tauxe, L. and Kent, D. V., 2004. A new statistical model for the geomagnetic field and the detection of shallow bias in paleomagnetic inclinations: Was the ancient field dipolar? In: J.E.T. Channell, D.V. Kent, W. Lowrie and J. Meert, Editors, *Timescales of the Internal Geomagnetic Field* Geophysical Monograph, 145, 101-116.

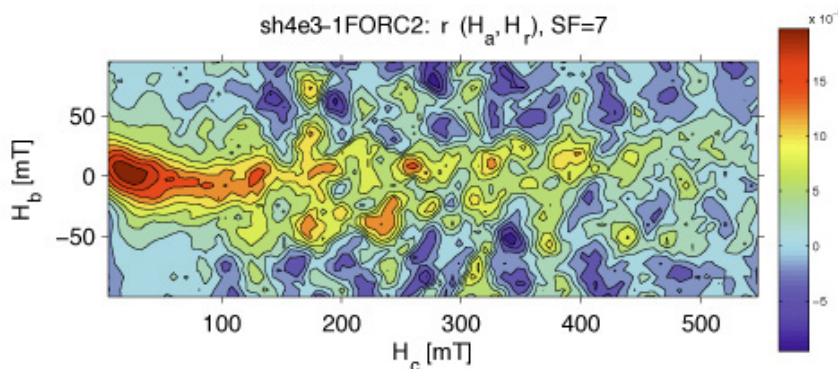


Figure 2: FORC diagram of a whole-rock specimen of the Shepody Fm. whose characteristic remanence is carried by hematite, indicating a contribution to the remanence that is dominated by magnetite.

Imaging of experimentally shocked pyrrhotite

Karin Lydia Louzada
Harvard University (Shock Compression Laboratory)

louzada@fas.harvard.edu

The remanent magnetization of many extraterrestrial materials, including meteorites and planetary surfaces, has often been used to infer the magnetic histories of their parent bodies. However, many materials are known to demagnetize due to shock (see e.g. Nagata, 1971; Pohl, et al., 1975). An appreciation of the effects that impact-related shocks have had on the magnetic signatures in these rocks is critical to our understanding of the magnetization of these materials.

Unmagnetized regions of crust surrounding large impact craters on Mars have been attributed to low pressure (a few GPa) shock-demagnetization of the magnetic carriers. Although the precise nature of the magnetic minerals in the Martian crust remains debated, pyrrhotite (Fe_{1-x}S , $0 < x < 0.125$) is the primary magnetic phase in Martian basaltic shergottites (Rochette, et al., 2001). Hydrostatic pressure experiments on pyrrhotite (Rochette, et al., 2003) indicate complete demagnetization of high-field isothermal remanent magnetization (IRM) at ~ 3 GPa. Shock experiments corroborate this result (Louzada, et

al., 2007). However, at higher pressures, shock demagnetization is less efficient and the total moment may even increase at shock pressures above 10 GPa (Louzada, et al., *in prep.*).

Shock (and high static pressure) in magnetic minerals is often accompanied by permanent increases in coercivity and saturation IRM (e.g. Louzada, et al., 2007; Gilder and Le Goff, 2008). Proposed mechanisms for this increase in single domain like behavior (or hardening) are: 1) a decrease of grain size via microfracturing, 2) changes in magnetostriction and/or magnetocrystalline energies, and 3) domain restructuring and wall nucleation as a result of increased crystal defects (Borradaile and Jackson, 1993; Gilder, et al., 2004; Gilder and Le Goff, 2008; Kontny, et al., 2007).

In this study we collected Bitter pattern and Magnetic Force Microscope images of shocked pyrrhotite to: 1) characterize the distribution of magnetic pyrrhotite in the natural samples, and 2) investigate the effects of shock on this distribution.

The natural pyrrhotites used in this study are mixtures of hexagonal (antiferromagnetic) and monoclinic (ferrimagnetic) pyrrhotite, with domain sizes ranging from single to multidomain (Louzada, et al., 2007). Bitter images of unshocked samples (Fig. 1a) show that the monoclinic pyrrhotite is confined to lamellae (dark grey/black) inside a hexagonal matrix (featureless grey). In monoclinic pyrrhotite, the domains are simply

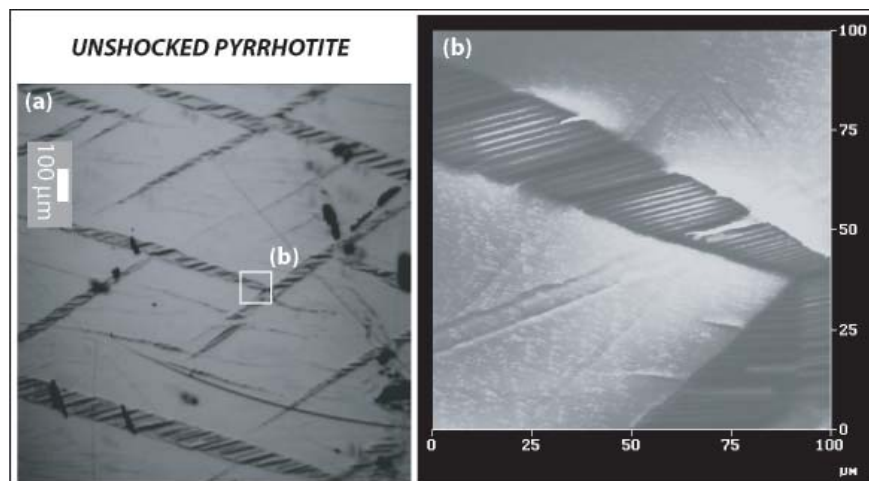


Figure 1. (a) Bitter pattern image of unshocked, unmagnetized pyrrhotite. The direction of view is approximately perpendicular to the *c*-axis. (b) MFM detail image of the boxed region in (a). Bright and dark areas are regions where the magnetization is directed out of and into the sample respectively.

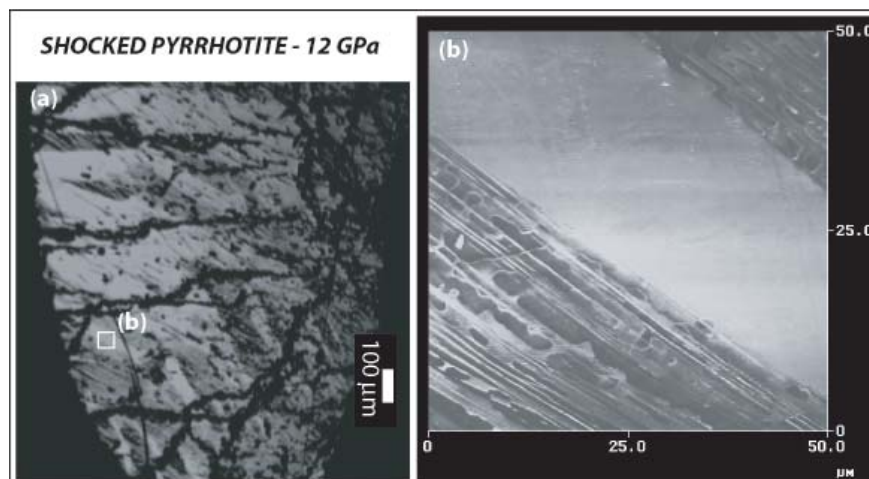


Figure 2. (a) Bitter pattern image of shocked (12 GPa) recovered pyrrhotite AF demagnetized to 85 mT. The direction of view is the same as in Figure 1. Fractures appear as black, roughly linear features, predominantly radially oriented from right to left. (b) MFM detail image of the boxed region in (a).

organized with straight parallel walls (Fig. 1b), typical of demagnetized pyrrhotite (Halgedahl and Fuller, 1981). The post-shock sample (Fig. 2a) is much fractured and the domains are disrupted (Fig. 2b). The undulating, non-planar domain walls are reminiscent of domain wall pinning in pyrrhotite with a thermal remanence (Halgedahl and Fuller, 1981). Domain restructuring due to new defects or microfractures in the crystal, and effective domain size reduction, are likely responsible for the observed magnetic hardening. Shock-induced nano-structures, analogous to planar deformation features in shocked quartz, have also been observed in strongly magnetized pyrrhotite from Bosumtwi crater, Ghana (Kontny, et al., 2007). We conclude that shock-induced permanent changes in magnetic properties of magnetic minerals preclude the use of meteorite remanences as reliable paleointensity indicators.

TIPS for producing clean images on the MFM: 1) take care older polishing slurries do not leave a colloid residue, 2) wipe samples down with ethanol (not acetone), and 3) scan at a 45° angle.

Thank you to the IRM staff for a very enjoyable visit, in particular Mike, Julie, Josh, Bruce, and Peat.

References:

- Borradaile, G.J., Jackson, M., 1993. Changes in magnetic remanence during simulated deep sedimentary burial. *Phys. Earth Planet. Int.*, 77, 315-327.
- Gilder, S.A., LeGoff, M., Chervin, J.-C., Peyronneau, J., 2004. Magnetic properties of single and multi-domain magnetite under pressures from 0 to 6 GPa. *Geophys. Res. Lett.*, 31, doi:10.1029/2004GL019844.
- Gilder, S.A., Le Goff, M., 2008. Systematic pressure enhancement of titanomagnetite magnetization. *Geophys. Res. Lett.*, 35, doi:10.1029/2008GL033325.
- Halgedahl, S.L., Fuller, M., 1981. The dependence on magnetic domain structure upon magnetization state in polycrystalline pyrrhotite. *Phys. Earth Planet. Int.*, 26, 93-97.
- Kontny, A., Elbra, T., Just, J., Pesonen, L.J., Schleicher, A.M., Zolk, J., 2007. Petrography and shock-related remagnetization of pyrrhotite in drill cores from the Bosumtwi Impact Crater Drilling Project, Ghana. *MAPS* 42, 811-827.
- Louzada, K.L., Stewart, S.T., Weiss, B.P., 2007. Effect of shock on the magnetic properties of pyrrhotite, the Martian crust, and meteorites. *Geophys. Res. Lett.*, 34, doi:10.1029/2006GL027685.
- Nagata, T., 1971. Introductory Notes on Shock Remanent Magnetization and Shock Demagnetization of Igneous Rocks. *Pure and Appl. Geophys.* 89, 159-177.
- Pohl, J., Bleil, U., Hornemann, U., 1975. Shock Magnetization and Demagnetization of Basalt by Transient Stress up to 10 kbar. *J. Geophys.*, 41, 23-41.
- Rochette, P., Lorand, J.-P., Fillion, G., Sautter, V., 2001. Pyrrhotite and the remanent magnetization of SNC meteorites: a changing perspective of Martian magnetism. *Earth Planet. Sci. Lett.*, 190, 1-12.
- Rochette, P., Fillion, G., Ballou, R., Brunet, F., Ouladdiaf, B., Hood, L., 2003. High pressure magnetic transition in pyrrhotite and impact demagnetization on Mars. *Geophys. Res. Lett.*, 30, doi:10.1029/2003GL017359.

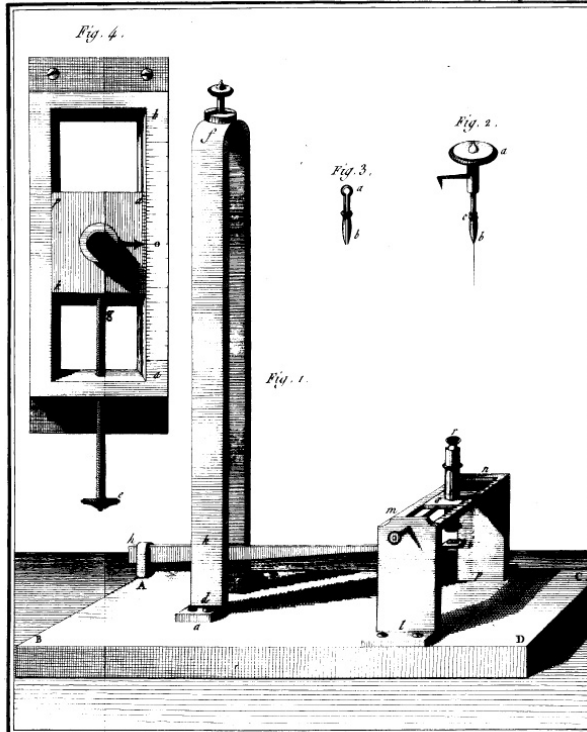


Fig. 1. Fig. 2. Fig. 3. Fig. 4.

A compass designed by Coulomb to measure small deviations from magnetic north. From "Description d'une boussole, dont l'aiguille est suspendue par un fil de soie," *Mémoires de l'Académie royale des sciences*, vol. 88, 560-568, 1785.

Current Articles

A list of current research articles dealing with various topics in the physics and chemistry of magnetism is a regular feature of the IRM Quarterly. Articles published in familiar geology and geophysics journals are included; special emphasis is given to current articles from physics, chemistry, and materials-science journals. Most abstracts are taken from INSPEC (© Institution of Electrical Engineers), Geophysical Abstracts in Press (© American Geophysical Union), and The Earth and Planetary Express (© Elsevier Science Publishers, B.V.), after which they are subjected to Procrustean culling for this newsletter. An extensive reference list of articles (primarily about rock magnetism, the physics and chemistry of magnetism, and some paleomagnetism) is continually updated at the IRM. This list, with more than 10,000 references, is available free of charge. Your contributions both to the list and to the Abstracts section of the IRM Quarterly are always welcome.

Archeomagnetism

- Aidona, E., R. Scholger, H.J. Mauritsch, and M. Perraki, Remanence acquisition in a Roman-style gold furnace, *Phys. Chem. Earth*, 33, 438-448, 2008.
- Beatrice, C., M. Coisson, E. Ferrara, and E.S. Olivetti, Relevance of magnetic properties for the characterisation of burnt clays and archaeological tiles, *Phys. Chem. Earth*, 33, 458-464, 2008.
- Casas, L., J.L. Briansó, A. Álvarez, K. Benzzi, and J. Shaw, Archaeomagnetic intensity data from the Saadien Tombs (Marrakech, Morocco), late 16th century, *Phys. Chem. Earth*, 33, 474-480, 2008.
- Catanzariti, G., G. McIntosh, A.M.M. Soares, E. Diaz-Martinez, P. Kresten, and M.L. Osete, Archaeomagnetic dating of a vitrified wall at the Late Bronze Age settlement of Miseri-

- cordia (Serpa, Portugal), *J. Archaeological Science*, 35 (5), 1399-1407, 2008.
- Catanzariti, G., G. McIntosh, M. Gomez-Paccard, V.C. Ruiz-Martinez, M.L. Osete, and A. Chauvin, Quality control of archaeomagnetic determination using a modern kiln with a complex NRM, *Phys. Chem. Earth*, 33, 427-437, 2008.
- De Marco, E., S. Spassov, D. Kondopoulou, I. Zananiri, and E. Gerofoka, Archaeomagnetic study and dating of a Hellenistic site in Katerini (N. Greece), *Phys. Chem. Earth*, 33, 481-495, 2008.
- De Marco, E., V. Spatharas, M. Gomez-Paccard, A. Chauvin, and D. Kondopoulou, New archaeointensity results from archaeological sites and variation of the geomagnetic field intensity for the last 7 millennia in Greece, *Phys. Chem. Earth*, 33, 578-595, 2008.
- Donadini, F., M. Kovacheva, M. Kostadinova, I.G. Hedley, and L.J. Pesonen, Palaeointensity determination on an early medieval kiln from Switzerland and the effect of cooling rate, *Phys. Chem. Earth*, 33, 449-457, 2008.
- Genevey, A., Y. Gallet, C.G. Constable, M. Korte, and G. Hulot, ArcheoInt: An upgraded compilation of geomagnetic field intensity data for the past ten millennia and its application to the recovery of the past dipole moment, *Geochem. Geophys. Geosys.*, 9, doi:10.1029/2007GC001881, 2008.
- Gogichaishvili, A., A.L. Martin-del-Pozo, J. Urrutia-Fucugauchi, and A.M. Soler-Arechalde, Human footprints found in Central Mexico could be at least 40,000 years old, *Geofisica Internacional*, 46 (1), 2007.
- Gomez-Paccard, M., and E. Beamud, Recent achievements in archaeomagnetic dating in the Iberian Peninsula: application to Roman and Mediaeval Spanish structures, *Journal of Archaeological Science*, 35 (5), 1389-1398, 2008.
- Herries, A.I.R., M. Kovacheva, and M. Kostadinova, Mineral magnetism and archaeomagnetic dating of a mediaeval oven from Zlatna Livada, Bulgaria, *Phys. Chem. Earth*, 33, 496-510, 2008.
- Hill, M.J., P. Lanos, M. Denti, and P. Dufresne, Archaeomagnetic investigation of bricks from the VIIIth-VIIth century BC Greek-indigenous site of Incoronata (Metaponto, Italy), *Phys. Chem. Earth*, 33, 523-533, 2008.
- Kostadinova, M., and M. Kovacheva, Case study of the Bulgarian Neolithic archaeological site of Piperkov Chiflik and its archaeomagnetic dating, *Phys. Chem. Earth*, 33, 511-522, 2008.
- Manoharan, C., K. Veeramuthu, R. Venkatachalapathy, T. Radhakrishna, and R. Ilango, Spectroscopic and ancient geomagnetic field intensity studies on archaeological pottery samples, India, *Lithuanian Journal of Physics*, 48 (2), 195-202, 2008.
- Pavon-Carrasco, F.J., M.L. Osete, J.M. Torta, L.R. Gaya-Pique, and P. Lanos, Initial SCHA.DI.00 regional archaeomagnetic model for Europe for the last 2000 years, *Phys. Chem. Earth*, 33, 596-608, 2008.
- Peters, C., N. Abrahamsen, O. Voss, C.M. Batt, and G. McDonnell, Magnetic investigations of iron age slags at Yderik, Denmark: Mineral magnetic comparison to UK slags, *Phys. Chem. Earth*, 33, 465-473, 2008.
- Ruiz-Martinez, V.C., F.J. Pavon-Carrasco, and G. Catanzariti, First archaeomagnetic data from northern Iberia, *Phys. Chem. Earth*, 33, 566-577, 2008.
- Schnepp, E., K. Worm, and R. Scholger, Improved sampling techniques for baked clay and soft sediments, *Phys. Chem. Earth*, 33, 407-413, 2008.
- Spassov, S., J. Hus, R. Geeraerts, and F. Heller, Archaeomagnetic dating of a High Middle Age likely iron working site in Corroy-le-Grand (Belgium), *Phys. Chem. Earth*, 33, 544-556, 2008.
- Suteu, C.A., C.M. Batt, and I. Zananiri, New developments in archaeomagnetic dating for Romania - A progress report on recent directional studies, *Phys. Chem. Earth*, 33, 557-565, 2008.
- Tema, E., and R. Lanza, Archaeomagnetic study of a lime kiln at Bazzano (northern Italy), *Phys. Chem. Earth*, 33, 534-543, 2008.
- Trapanese, A., C.M. Batt, and E. Schnepp, Sampling methods in archaeomagnetic dating: A comparison using case studies from Wörterberg, Eisenerz and Gams Valley (Austria), *Phys. Chem. Earth*, 33, 414-426, 2008.

Bio(geo)magnetism

- Carvallo, C., P. Sainctavit, M.A. Arrio, N. Menguy, Y.H. Wang, G. Ona-Nguema, and S. Brice-Profeta, Biogenic vs. abiogenic magnetite nanoparticles: A XMCD study, *Am. Mineral.*, 93 (5-6), 880-885, 2008.
- Kasyutich, O., A. Sarua, and W. Schwarzacher, Bioengineered magnetic crystals, *J. Phys. D: Appl. Phys.*, 41 (13), 2008.
- Vacha, M., T. Puzova, and D. Drstková, Ablation of antennae does not disrupt magnetoreceptive behavioural reaction of the American cockroach to periodically rotated geomagnetic field, *Neuroscience Lett.*, 435 (2), 103-107, 2008.
- Watanabe, S., M. Yamanaka, A. Sakai, K. Sawada, and T. Iwasa, Laser Raman spectroscopic study on magnetite formation in magnetotactic bacteria, *Materials Trans.*, 49, 874-878, 2008.
- Wiltschko, W., and R. Wiltschko, Magnetoreception in birds: two receptors for two different tasks, *J. Ornithology*, 148, S61-S76, 2007.

Environmental Magnetism and Paleoclimate Proxies

- Bidegain, J.C., A.A. Bartel, F.R. Sives, and R.C. Mercader, Mossbauer and magnetic studies of parent material from argentine pampas soils, *Hyperfine Interact.*, 175 (1-3), 35-41, 2007.
- Forsberg, C.F., F. Florindo, J. Grutzner, A. Venuti, and A. Solheim, Sedimentation and aspects of glacial dynamics from physical properties, mineralogy and magnetic properties at ODP Sites 1166 and 1167, Prydz Bay, Antarctica, *Palaeogeogr. Palaeoclimatol. Palaeoecol.*, 260, 184-201, 2008.
- Hu, S.Y., X.M. Duan, M.J. Shen, U. Blaha, W. Roesler, H.T. Yan, E. Appel, and V. Hoffmann, Magnetic response to atmospheric heavy metal pollution recorded by dust-loaded leaves in Shougang industrial area, western Beijing, *Chin. Sci. Bull.*, 53 (10), 1555-1564, 2008.
- Jelenska, M., A. Hasso-Agopsowicz, M. Kadzialko-Hofmohl, A. Sukhorada, K. Bondar, and Z. Matviishina, Magnetic iron oxides occurring in chernozem soil from Ukraine and Poland as indicators of pedogenic processes, *Stud. Geophys. Geod.*, 52 (2), 255-270, 2008.
- Kapicka, A., E. Petrovsky, H. Fialová, Podrázsky, and I. Dvorač, High resolution mapping of anthropogenic pollution in the Giant Mountains National Park using soil magnetometry, *Stud. Geophys. Geod.*, 52, 271-284, 2008.
- Kissel, C., C. Laj, A.M. Piotrowski, S.L. Goldstein, and S.R. Hemming, Millennial-scale propagation of Atlantic deep waters to the glacial Southern Ocean, *Paleoceanography*, 23, PA2102, doi:10.1029/2008PA001624, 2008.
- Lanci, L., B. Delmonte, V. Maggi, J.R. Petit, D.V. Kent, Ice mag-

netization in the EPICA-Dome C ice core: Implication for dust sources during glacial and interglacial periods, *J. Geophys. Res.*, 113, D14207, doi:10.1029/2007JD009678, 2008.

Liu, P., C.S. Jin, S. Zhang, J.M. Han, and T.S. Liu, Magnetic fabric of early Quaternary loess-paleosols of Longdan Profile in Gansu Province and the reconstruction of the paleowind directions, *Chin. Sci. Bull.*, 53 (9), 1450-1452, 2008.

Lu, S.G., and S.Q. Bai, Magnetic characterization and magnetic mineralogy of the Hangzhou urban soils and its environmental implications, *Chin. J. Geophys.*, 51 (3), 762-769, 2008.

Maher, B.A., Environmental magnetism and climate change, *Contemp. Phys.*, 48 (5), 247-274, 2007.

Shankar, R., and K. Pandarinath, Mineral magnetic signature of the Early Holocene intense monsoon conditions recorded in sediments from the southwestern Indian continental margin, *J. Geol. Soc. India*, 71 (5), 670-682, 2008.

Wang, X.S., R. Lovlie, P. Su, and X.Z. Fan, Magnetic signature of environmental change reflected by Pleistocene lacustrine sediments from the Nihewan Basin, North China, *Palaeogeogr. Palaeoclimatol. Palaeoecol.*, 260 (3-4), 452-462, 2008.

Wang, G., D.S. Xia, X.M. Liu, F.H. Chen, Y. Yu, L.P. Yang, J.H. Chen, and A.F. Zhou, Spatial and temporal variation in magnetic properties of street dust in Lanzhou City, China, *Chin. Sci. Bull.*, 53 (12), 1913-1923, 2008.

Extraterrestrial Magnetism

Arkani-Hamed, J., B. Seyed-Mahmoud, K.D. Aldridge, and R.E. Baker, Tidal excitation of elliptical instability in the Martian core: Possible mechanism for generating the core dynamo, *J. Geophys. Res.*, 113 (E6), 2008.

Gattacceca, J., P. Rochette, M. Gounelle, and M. Van Ginneken, Magnetic anisotropy of HED and Martian meteorites and implications for the crust of Vesta and Mars, *Earth Planet. Sci. Lett.*, 270 (3-4), 280-289, 2008.

Goetz, W., K. Leer, H.P. Gunnlaugsson, et al., Search for magnetic minerals in Martian rocks: Overview of the Rock Abrasion Tool (RAT) magnet investigation on Spirit and Opportunity, *J. Geophys. Res.*, 113 (E5), 2008.

Geomagnetism and Geodynamo Studies

Beggan, C., and K. Whaler, Core flow modelling assumptions, *Phys. Earth Planet. Int.*, 167 (3-4), 217-222, 2008.

Biggin, A.J., G. Strik, and C.G. Langereis, Evidence for a very-long-term trend in geomagnetic secular variation, *Nature Geoscience*, 1 (6), 395-398, 2008.

Olsen, N., and M. Manda, Rapidly changing flows in the Earth's core, *Nature Geoscience*, 1 (6), 390-394, 2008.

Pinheiro, K., and A. Jackson, Can a 1-D mantle electrical conductivity model generate magnetic jerk differential time delays?, *Geophys. J. Int.*, 173 (3), 781-792, 2008.

Thebault, E., A proposal for regional modelling at the Earth's surface, R-SCHA2D, *Geophys. J. Int.*, 174 (1), 118-134, 2008.

Thebault, E., and L. Gaya-Pique, Applied comparisons between SCHA and R-SCHA regional modeling techniques, *Geochem. Geophys. Geosys.*, 9, 2008.

Wardinski, I., and M. Korte, The evolution of the core-surface flow over the last seven thousands years, *J. Geophys. Res.*, 113 (B5), 2008.

Xian, F., Z.S. An, Z.K. Wu, J.W. Beck, H.G. Yu, Z.H. Kang, and P. Cheng, A simple model for reconstructing geomagnetic field intensity with ^{10}Be production rate and its application in Loess studies, *Science in China D-Earth Sci.*, 51, 855-861, 2008.

Instrumentation

Kirschvink, J.L., R.E. Kopp, T.D. Raub, C.T. Baumgartner, and J.W. Holt, Rapid, precise, and high-sensitivity acquisition of paleomagnetic and rock-magnetic data: Development of a low-noise automatic sample changing system for superconducting rock magnetometers, *Geochem. Geophys. Geosys.*, 9, 2008.

Polik, Z., T. Ludvig, and M. Kuczmann, Measuring of the scalar hysteresis characteristic with a controlled flux density using analog and digital integrators, *Journal of Electrical Engineering-Elektrotechnicky Casopis*, 58, 236-239, 2007.

Tellini, B., R. Giannetti, and S. Lizon-Martinez, Sensorless measurement technique for characterization of magnetic material under nonperiodic conditions, *Ieee Transactions on Instrumentation and Measurement*, 57 (7), 1465-1469, 2008.

Uehara, M., and N. Nakamura, Identification of stable remanence carriers through a magneto-impedance scanning magnetic microscope, *Stud. Geophys. Geod.*, 52 (2), 211-223, 2008.

Warot-Fonrose, B., F. Houdellier, M.J. Hytch, L. Calmels, V. Serin, and E. Snoeck, Mapping inelastic intensities in diffraction patterns of magnetic samples using the energy spectrum imaging technique, *Ultramicroscopy*, 108 (5), 393-398, 2008.

Magnetic Field Records

Bleil, U., and M. Dillon, Holocene Earth's magnetic field variations recorded in marine sediments of the NW African continental margin, *Stud. Geophys. Geod.*, 52, 133-155, 2008.

Cassata, W.S., B.S. Singer, and J. Cassidy, Laschamp and Mono Lake geomagnetic excursions recorded in New Zealand, *Earth Planet. Sci. Lett.*, 268 (1-2), 76-88, 2008.

Irruzun, M.A., C.S.G. Gogorza, A.M. Sinito, M.A.E. Chaparro, H. Nunez, and J.M. Lirio, Paleosecular variations 12-20 kyr as recorded by sediments from Lake Moreno (Southern Argentina), *Stud. Geophys. Geod.*, 52 (2), 157-172, 2008.

Yamamoto, Y., and H. Hoshi, Paleomagnetic and rock magnetic studies of the Sakurajima 1914 and 1946 andesitic lavas from Japan: A comparison of the LTD-DHT Shaw and Thellier paleointensity methods, *Phys. Earth Planet. Int.*, 167 (1-2), 118-143, 2008.

Yang, T.H., M. Hyodo, Z.Y. Yang, L. Ding, H.D. Li, J.L. Fu, S.B. Wang, H.W. Wang, and T. Mishima, Latest Olduvai short-lived reversal episodes recorded in Chinese loess, *J. Geophys. Res.*, 113, doi:10.1029/2007JB005264, 2008.

Magnetic Remanence and Remanence Acquisition Processes

Adachi, T., and G. Kletetschka, Impact-pressure controlled orientation of shatter cone magnetizations in Sierra Madera, Texas, USA, *Stud. Geophys. Geod.*, 52 (2), 237-254, 2008.

Istomin, V.E., and A.D. Duchkov, Iron ions Fe^{2+} and Fe^{3+} in a magnetic model of the sedimentary medium, *Izvestiya-Phys. Solid Earth*, 44 (5), 421-426, 2008.

Kohout, T., G. Kletetschka, F. Donadini, M. Fuller, and E. Herero-Bervera, Analysis of the natural remanent magnetization of rocks by measuring the efficiency ratio through alternating field demagnetization spectra, *Stud. Geophys. Geod.*, 52 (2), 225-235, 2008.

Mineral and Rock Magnetism

- Antunes, A.B., M.N. Baibich, V. Gil, C. Moure, V. Allegret-Maret, and O. Pena, Ferro-ferrimagnetic transitions in rare-earth perovskites, *J. Magn. Magn. Mater.*, 320 (14), E464-E467, 2008.
- Chang, L., A.P. Roberts, Y. Tang, B.D. Rainford, A.R. Muxworthy, and Q.W. Chen, Fundamental magnetic parameters from pure synthetic greigite (Fe_3S_4), *J. Geophys. Res.*, 113, doi:10.1029/2007JB005502, 2008.
- Gilder, S.A., and M. Le Goff, Systematic pressure enhancement of titanomagnetite magnetization, *Geophys. Res. Lett.*, 35, doi:10.1029/2008GL033325, 2008.
- Kosterov, A., and K. Fabian, Twinning control of magnetic properties of multidomain magnetite below the Verwey transition revealed by measurements on individual particles, *Geophys. J. Int.*, 174 (1), 93-106, 2008.
- Liu, Q.S., Y.S. Liu, S. Gao, T. Yang, Y.H. Luo, Z.M. Jin, Magnetic study of mafic granulite xenoliths from the Hannuoba basalt, north China, *Geochem. Geophys. Geosys.*, 9, doi:10.1029/2008GC001952, 2008.
- Madsen, D.E., M.F. Hansen, C.B. Koch, and S. Morup, Interactions between goethite particles subjected to heat treatment, *J. Phys.: Condens. Matter*, 20 (13), 135215 (6 pp.), 2008.
- Martin-Hernandez, F., M.J. Dekkers, I.M.A. Bominaar-Silkens, and J.C. Maan, Magnetic anisotropy behaviour of pyrrhotite as determined by low- and high-field experiments, *Geophys. J. Int.*, 174 (1), 42-54, 2008.
- Mazo-Zuluaga, J., J. Restrepo, and J. Mejia-Lopez, Influence of non-stoichiometry on the magnetic properties of magnetite nanoparticles, *J. Phys.: Condens. Matter*, 20 (19), 2008.
- Pattan, J.N., G. Parthiban, V.K. Banakar, A. Tomer, and M. Kulkarni, Relationship between chemical composition and magnetic susceptibility in sediment cores from Central Indian Ocean Basin, *J. Earth Syst. Sci.*, 117 (2), 113-119, 2008.
- Pentcheva, R., and H.S. Nabi, Interface magnetism in $\text{Fe}_2\text{O}_3/\text{FeTiO}_3$ heterostructures, *Phys. Rev. B.*, 77 (17), 2008.
- Tannous, C., and J. Gieraltowski, The Stoner-Wohlfarth model of ferromagnetism, *Eur. J. Phys.*, 29 (3), 475-487, 2008.

Mineral Physics and Chemistry

- Dezsi, I., C. Fetzer, A. Gombkoto, I. Szucs, J. Gubicza, and T. Ungar, Phase transition in nanomagnetite, *J. Appl. Phys.*, 103 (10), 2008.
- Lodziana, Z., Surface Verwey transition in magnetite, *Phys. Rev. Lett.*, 99 (20), 206402-1, 2007.
- Siemes, H., B. Klingenberg, E. Rybacki, A. Naumann, W. Schafer, E. Jansen, and K. Kunze, Glide systems of hematite single crystals in deformation experiments, *Ore Geol. Rev.*, 33 (3-4), 255-279, 2008.
- Stoltz, D., A. Onsten, U.O. Karlsson, and M. Gothelid, Scanning tunneling microscopy of Fe- and O-sublattices on $\text{Fe}_3\text{O}_4(100)$, *Ultramicroscopy*, 108, 540-544, 2008.

Paleomagnetism and Tectonics

- Aubourg, C., G. Tshoso, B. Le Gall, H. Bertrand, J.J. Tiercelin, A.B. Kampunzu, J. Dyment, and M. Modisi, Magma flow revealed by magnetic fabric in the Okavango giant dyke swarm, Karoo igneous province, northern Botswana, *J. Volcanol. Geotherm. Res.*, 170, 247-261, 2008.
- Bispo-Santos, F., M.S. D'Agrella, I.I.G. Pacca, L. Janikian, R.I.F.

- Trindade, S.A. Elming, J.A. Silva, M.A.S. Barros, and F.E.C. Pinho, Columbia revisited: Paleomagnetic results from the 1790 Ma colider volcanics (SW Amazonian Craton, Brazil), *Precambrian Res.*, 164, 40-49, 2008.
- Chenet, A.L., F. Fluteau, V. Courtillot, M. Gerard, and K.V. Subbarao, Determination of rapid Deccan eruptions across the Cretaceous-Tertiary boundary using paleomagnetic secular variation: Results from a 1200-m-thick section in the Mahabaleshwar escarpment, *J. Geophys. Res.*, 113 (B4), 2008.
- De Waele, B., and S.A. Pisarevsky, Geochronology, paleomagnetism and magnetic fabric of metamorphic rocks in the northeast Fraser Belt, Western Australia, *Aust. J. Earth Sci.*, 55, 605-621, 2008.
- Dobrovine, P.V., and J.A. Tarduno, Linking the Late Cretaceous to Paleogene Pacific plate and the Atlantic bordering continents using plate circuits and paleomagnetic data, *J. Geophys. Res.*, 113, B07104, doi:10.1029/2008JB005584, 2008.
- Gong, Z., M.J. Dekkers, J. Dinares-Turell, and T.A.T. Mullender, Remagnetization mechanism of Lower Cretaceous rocks from the Organya Basin (Pyrenees, Spain), *Stud. Geophys. Geod.*, 52, 187-210, 2008.
- Gonzalez-Naranjo, G.A., R.S. Molina-Garza, and G. Chavez-Cabello, Paleomagnetic study of Jurassic and Cretaceous rocks north of San Marcos fault, central Coahuila, Mexico, *Geofisica Internacional*, 47, 41-55, 2008.
- Hao, Q.Z., F. Oldfield, J. Bloemendal, and Z.T. Guo, The magnetic properties of loess and paleosol samples from the Chinese Loess Plateau spanning the last 22 million years, *Palaeogeogr. Palaeoclimatol. Palaeoecol.*, 260 (3-4), 389-404, 2008.
- Harlan, S.S., J.W. Geissman, L.W. Snee, Paleomagnetism of Proterozoic mafic dikes from the Tobacco Root Mountains, southwest Montana, *Precambrian Res.*, 163, 239-264, 2008.
- Hnat, J.S., B.A. van der Pluijm, R. van der Voo, and W.A. Thomas, Differential displacement and rotation in thrust fronts: A magnetic, calcite twinning and palinspastic study of the Jones Valley thrust, Alabama, US Appalachians, *J. Struct. Geol.*, 30 (6), 725-738, 2008.
- Hudson, M.R., V.J.S. Grauch, and S.A. Minor, Rock magnetic characterization of faulted sediments with associated magnetic anomalies in the Albuquerque Basin, Rio Grande rift, New Mexico, *Geol. Soc. Am. Bull.*, 120 (5-6), 641-658, 2008.
- Hulot, G., Palaeomagnetism - Core message, *Nature Geoscience*, 1, 345-346, 2008.
- Kent, D.V., and P.E. Olsen, Early Jurassic magnetostratigraphy and paleolatitudes from the Hartford continental rift basin (eastern North America): Testing for polarity bias and abrupt polar wander in association with the central Atlantic magmatic province, *J. Geophys. Res.*, 113, 2008.
- Lu, R.K., G.W. Zhang, H.M. Zhong, J. Xia, J.S. Tong, and X.J. Yu, Characteristics of magnetic fabrics in western segment of the Altun fault belt and its tectonic significance, *Chin. J. Geophys.*, 51, 752-761, 2008.
- Maes, S.M., E.C. Ferre, B. Tikoff, P.E. Brown, and J.S. Marsh, Rock magnetic stratigraphy of a mafic layered sill: A key to the Karoo volcanics plumbing system, *J. Volcanol. Geotherm. Res.*, 172 (1-2), 75-92, 2008.
- Mankinen, E.A., Paleomagnetic study of late Miocene through Pleistocene igneous rocks from the southwestern USA: Results from the historic collections of the US Geological Survey Menlo Park laboratory, *Geochem. Geophys. Geosys.*, 9, 2008.
- O'Driscoll, B., C.E. Stevenson, and V.R. Trolly, Mineral lamination development in layered gabbros of the British palaeogene igneous province: A combined anisotropy of magnetic susceptibility, quantitative textural and mineral chemistry study, *J. Petrology*, 49 (6), 1187-1221, 2008.

- Paquereau-Lebti, P., M. Fornari, P. Roperch, J.C. Thouret, and O. Macedo, Paleomagnetism, magnetic fabric, and Ar-40/Ar-39 dating of Pliocene and Quaternary ignimbrites in the Arequipa area, southern Peru, *Bull Volcanol.*, 70, 977-997, 2008.
- Prothero, D.R., E. Draus, T.C. Cockburn,, E.A. Nesbitt, Paleomagnetism and counterclockwise tectonic rotation of the Upper Oligocene Sooke Formation, southern Vancouver Island, British Columbia, *Can. J. Earth Sci.*, 45, 499-507, 2008.
- Rapalini, A.E., M. Calderon, S. Singer, F. Herve, and U. Cordani, Tectonic implications of a paleomagnetic study of the Sarmiento Ophiolitic Complex, southern Chile, *Tectonophysics*, 452 (1-4), 29-41, 2008.
- Rapalini, A.E., and L.S. Bettucci, Widespread remagnetization of late Proterozoic sedimentary units of Uruguay and the apparent polar wander path for the Rio de La Plata craton, *Geophys. J. Int.*, 174 (1), 55-74, 2008.
- Raposo, M.I.B., and T.S. Berquo, Tectonic fabric revealed by AARM of the proterozoic mafic dike swarm in the Salvador city (Bahia state): Sao Francisco Craton, NE Brazil, *Phys. Earth Planet. Int.*, 167, 179-194, 2008.
- Tamaki, M., and Y. Itoh, Tectonic implications of paleomagnetic data from upper Cretaceous sediments in the Oyubari area, central Hokkaido, Japan, *Island Arc*, 17, 270-284, 2008.
- Tetreault, J., C.H. Jones, E. Erslev, S. Larson, M. Hudson, and S. Holdaway, Paleomagnetic and structural evidence for oblique slip in a fault-related fold, Grayback monocline, Colorado, *Geol. Soc. Am. Bull.*, 120, 877-892, 2008.
- Tong, Y., Z.Y. Yang, L. Zheng, T.S. Yang, L.F. Shi, Z.M. Sun, and J.L. Pei, Early Paleocene paleomagnetic results from southern Tibet, and tectonic implications, *Int. Geol. Rev.*, 50, 546-562, 2008.

2008 Conference on Rock Magnetism, *continued from page 1...*

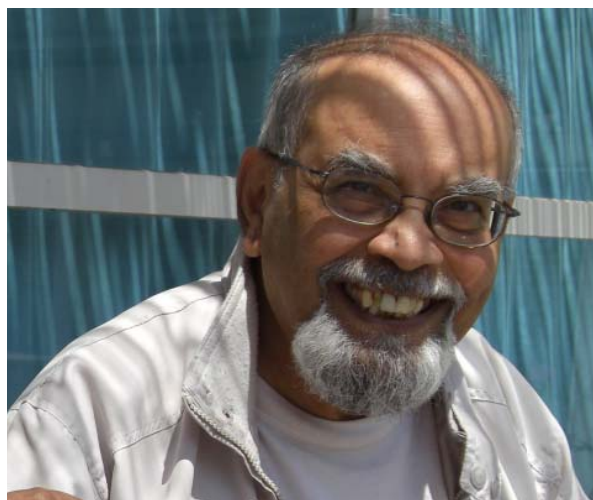
arrays using electron-beam lithography of iron thin film. The goal is to better understand magnetostatic interactions by precisely controlling particle size and spacing, combining observations with micromagnetic modeling.

Two talks delved into recent advances in our understanding of disordered systems. France Lagroix discussed order/disorder transitions in the hematite-ilmenite solid solution series and recent experiments aimed at understanding the magnetic phase diagram of the system. She questioned the use of the term ‘superparamagnetic’ for states with only short range, but no long range ordering. Karl Fabian commented that he has adopted the term PM’ to denote such states (e.g. IRM Quarterly v. 17 no. 4). Later in the day, Candice Viddal and Roy Roshko discussed recent modeling work where they found that a Preisach system of interacting nanoparticles may display low-temperature behavior that had previously been linked only to spin glass.

Karl Fabian et al. discussed the state of our understanding behind theories of thermal remanence (TRM), thermochemical remanent magnetization (TCRM), and detrital remanence (DRM) with respect to recovering accurate paleointensity determinations. Lisa Tauxe and Ritayan Mitra took this further and presented an experimental and theoretical study of the role that flocculation plays in DRM acquisition, including its influence on inclination error and DRM linearity with respect to field strength.

Extraterrestrial Magnetism

Jérôme Gattacceca and Ben Weiss gave nice overviews of the challenges and opportunities in recovering paleofield information from meteorites. Most meteorites have undergone some kind of shock and/or thermal event and (as pointed out in the question-and-answer period) may also have been contaminated by exposure to strong magnets on Earth. Considerable effort is currently being applied toward differentiating a shock magnetization or a viscous magnetization acquired on Earth from a primitive TRM. With care in addressing some of these issues we can begin to learn about paleofields in the early solar system, planetary evolution, and early planetary dynamos.



Best quote of the meeting: (photo courtesy of Enver Murad)

“Follow your star, but keep a flashlight* handy.”
-- Subir K. Banerjee, June 4, 2008

* flashlight = basic physics and geology

In other talks, Stuart Gilder et al. reported on an experimental examination of pressure effects on titanomagnetite magnetization, which has implications for deeply-rooted crustal anomalies both on Earth and other planets. Saturation remanence and coercivity both increase with increasing applied pressure load, and the magnitude of the effect increases with increasing Ti content. Pierre Rochette et al. compared the magnetic properties of lunar materials derived from both meteorites and sample return. Minoru Uehara and Norihiro Nakamura used a magneto-impedance magnetic microscope to measure fine-scale variations in magnetization of a piece of chondrite.

Paleofield Behavior and Records

John Tarduno examined the role that paleomagnetism can play in establishing dynamo evolution, but the search continues for materials (such as certain single crystals) that are both thermally and chemically stable over the relevant time scales. A better understanding of geodynamo evolution may also play a role in understanding atmospheric evolution; the presence or absence of a strong field can affect the degree to which atmosphere is swept away by the solar wind.

*cont'd.
on p. 10...*

Several talks explored the differences between dipole and non-dipole field behavior. One of the most basic tenets of paleomagnetism assumes that when averaged over a sufficiently long time interval, the Earth's magnetic field can be represented by a geocentric axial dipole (GAD). Catherine Constable presented ongoing efforts to model paleomagnetic field behavior over millennial to million year time scales and examined the structure and persistence of departures from GAD: the non-axial dipole (NAD) components. Even after averaging over 5 Ma, some zonal structure is observed in the field, and this result appears to be robust.

Roman Leonhardt, Karl Fabian et al. have used a Bayesian inversion technique on several high-resolution paleomagnetic records to develop a different model of field morphology. The model shows some similarities and differences in field evolution between an excursion (Laschamp) and the last reversal. While in both cases reverse flux patches at the core-mantle boundary move poleward from near the equator, only in the case of the reversal do these patches cross the inner-core tangent cylinder. They also find that during the excursion, both dipolar and non-dipolar components decrease at approximately the same rate while during the reversal there is a relative increase in the non-dipolar component.

Ken Hoffman and Brad Singer argued for a magnetic source separation whereby the dipole field is generated in the deep core and the non-dipole field is produced in the shallow outer core and is strongly influenced by core-mantle interactions. They proposed the new term Shallow-Core Generated (SCOR) field to denote this component that is predominantly (but not completely) non-dipolar and suggested it is this SCOR field that dominates during both reversals and excursions. They observe that VGPs in a set of Tahiti lavas are clustered near Western Australia (a flux lobe in a 400 yr field model) during both the last reversal and an excursion (Big Lost).

Possible orbital influences on the geodynamo were discussed by Mike Fuller, who is interested in the relatively recent revival of the idea of precession as a possible power source for the geodynamo. Paleomagnetic data over the past 5 Ma may support links to excursions and reversals that occur preferentially at certain points in the obliquity cycle. In addition, recent laboratory studies have shown that precession combined with rotation can lead to core convection. Nicolas Thouveny reviewed in more detail a potential coincidence between dipole lows and the obliquity signal. He presented data suggesting dipole lows and excursions preferentially occur during interglacials. He additionally pointed out that though sedimentary records may be biased by paleoenvironmental contamination, both ^{10}Be data and marine magnetic records show similarities with the marine sedimentary records, suggesting a real link between orbital variations and the geomagnetic field.

The session finished up with several talks on paleointensity methods. Mark Dekkers presented some recent results using the multi-specimen parallel pTRM method. Ron Shaar described using a set of well-characterized synthetic slags to evaluate Thellier methods and interpretation. Andrew Biggin discussed possible reasons

for consistent differences between some microwave and traditional thermal Thellier experiments.

Environmental Magnetism

Topics in this session ranged from using magnetic proxies to uncover paleoenvironmental conditions, to magnetism in modern land use and pollution monitoring. Barbara Maher discussed some of the efforts involved in using magnetic proxies to trace East Asian monsoon intensity in loess. With the recognition that the interpretation of magnetic soil enhancement as a rainfall proxy varies with soil type, and when combined with $\delta^{18}\text{O}$ records from Chinese speleothems, a more complex picture of monsoon variations becomes evident. Ted Evans gave a more



One of many extra-curricular meetings of magnetic minds. (Photo courtesy of Enver Murad.)

historical overview of loss magnetism and the evolution of our understanding of loess as both a geomagnetic and paleoclimatic recorder.

Richard Reynolds et al. described an application currently employed by land-use managers in the western U.S. whereby magnetic properties are used as a proxy for atmospheric dust-derived nutrient loads in the soil. Dust accumulation and erosion in soils can be mapped using susceptibility, and changes in land-use practices can be tied to effects on nutrient load.

A recurring theme in the session was using magnetism as a tracer for natural vs. anthropogenic input to a system. Christine Franke et al. examined sediments from the Seine River with the aim of developing magnetic fingerprints for different geologic and anthropogenic inputs and processes. Leonardi Sagnotti used magnetism as tracer of airborne particulate matter in a study of air pollution monitoring.

Biogeomagnetism and Nanomagnetism

The final session focused on two fields which have been rapidly growing in recent years. Yohan Guyodo discussed complex behaviors observed in nanoparticles of iron oxyhydroxides that point to nanoclusters of material. These presence or absence of these clusters may play a role in the how the particles evolve in soil via chemical or biological mediation.

Richard Patrick et al. described the technique of x-ray magnetic circular dichroism as applied to geomagnetic minerals. This technique can provide quantitative information on cation valence state and coordination, as well as the distribution of vacancies in ferri- and ferromagnetic minerals.

Richard Frankel reviewed current understanding of and open questions regarding magnetosomes and magnetotaxis in bacteria. Michael Winklhofer presented recent work on understanding the physical basis of magnetic sense in animals. Results of a study in birds shows that they use an inclination compass that allows them to sense increasing or decreasing inclination, but not polarity.

In addition to the main sessions, two afternoons were devoted to mini-courses in Mössbauer spectroscopy (Enver Murad) and magnetic microscopy (Bruce Moskowitz and Richard Harrison). Notes from these courses can be found on the conference website: www.irm.umn.edu/Cargese/. A morning poster session rounded out the talks and re-emphasized how broadly encompassing our field is.

Special thanks are due to the organizing committee, who put in many long hours ensuring that the meeting went smoothly: Pierre Rochette (CEREGE, France); Mike Jackson, Bruce Moskowitz, and Joshua Feinberg (IRM, US); Fabio Florindo (INGV, Italy); and Andrew Roberts (Univ. Southampton, UK).

And of course the meeting would not have been possible without the conference sponsors: National Science Foundation (NSF, USA); Centre National de la Recherche Scientifique (CNRS, France); and the Istituto Nazionale di Geofisica e Vulcanologia (INGV, Italy).

Charles-Augustin de Coulomb

*b. 14 June, 1736, Angoulême, France
d. 23 August, 1806, Paris, France*

Trained as an engineer, Charles-Augustin de Coulomb spent the early part of his career in the military, including nine years in the West Indies. During this time he was in charge of the construction of Fort Bourbon and gained significant practical experience in engineering, structural design, and mechanics that would influence his later theoretical writings and research. After returning to France in 1772, he was able to devote more time to his scientific work, and one of his earliest efforts described a magnetic compass capable of measuring diurnal variations in the magnetic field. This memoir claimed the *Grand Prix* of the *Académie des Sciences* in 1777 and was the beginning of his work with the torsion balance. Further work with the torsion balance led to his formulation of 'Coulomb's Law' describing the inverse-square law of attraction and repulsion between charged bodies. Coulomb went on to write seven treatises on electricity and magnetism, and presented at least 25 other papers on magnetism, friction, materials strength, torsion, hydraulics, mechanics, and ergonomics at the *Académie*. The SI unit of electric charge was ultimately named after Coulomb.

2008 VISITING FELLOWS

JULY - DECEMBER

Charles Aubourg, *University Cergy Pontoise*,
P-transition in immature claystones

Amy Chen, *Ludwig-Maximilians University*,
Low-temperature hysteresis, remanence, and
susceptibility of partially oxidized SD & 2D
Fe₃O₄

Annika Ferk, *Montanuniversität Leoben*,
Volcanic glass - an ideal recording material?
Rock magnetic investigations

Beatriz Ortega, *Universidad Nacional
Autónoma de México*, Environmental
magnetism record of Holocene from
tropical lake sediments on western México:
Tacambaro lake

Francesca Saragnese, *University of Turin*,
Atmospheric particulate matter revealed by
magnetic analysis

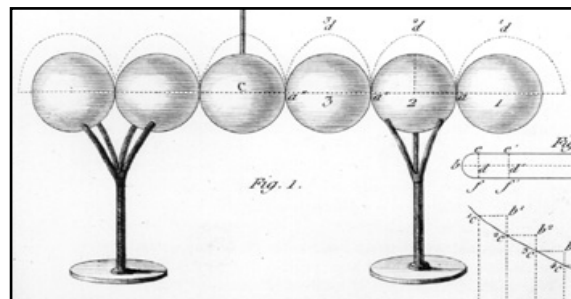
Jairo Francisco Savian, *University of São
Paulo*, Magnetic Characteristics of Soils
Containing Biomineralizations

Xixi Zhao, *University of California, Santa
Cruz*, Rock magnetic characterization of
sedimentation process and faulting activities
of the Nankai Trough

Application deadline for 2009 Visiting Fellows (January - June)

October 30, 2008

See www.irm.umn.edu/IRM/Visiting.html/
for more information.



From Coulomb's "Sixth Memoir on Electricity and Magnetism", *Mémoires de l'Académie royale des sciences*, vol. 91, 617-705, 1788.

University of Minnesota
291 Shepherd Laboratories
100 Union Street S. E.
Minneapolis, MN 55455-0128
phone: (612) 624-5274
fax: (612) 625-7502
e-mail: irm@umn.edu
www.irm.umn.edu

Nonprofit Org.
U.S Postage
PAID
Mpls., MN
Permit No. 155

The IRM Quarterly

The *Institute for Rock Magnetism* is dedicated to providing state-of-the-art facilities and technical expertise free of charge to any interested researcher who applies and is accepted as a Visiting Fellow. Short proposals are accepted semi-annually in spring and fall for work to be done in a 10-day period during the following half year. Shorter, less formal visits are arranged on an individual basis through the Facilities Manager.

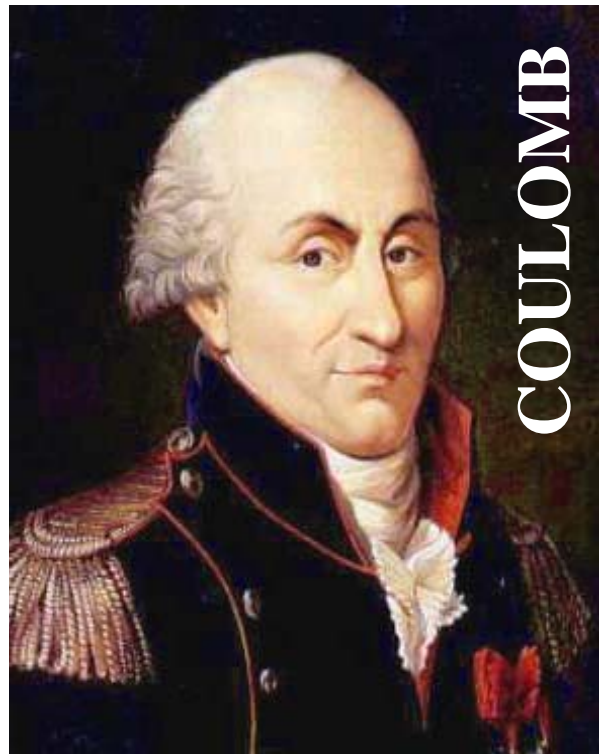
The *IRM* staff consists of **Subir Banerjee**, Professor/Founding Director; **Bruce Moskowitz**, Professor/Director; **Joshua Feinberg**, Assistant Professor/Associate Director; **Jim Marvin**, Emeritus Scientist; **Mike Jackson**, **Peat Sølheid**, and **Julie Bowles**, Staff Scientists.

Funding for the *IRM* is provided by the **National Science Foundation**, the **W. M. Keck Foundation**, and the **University of Minnesota**.

The *IRM Quarterly* is published four times a year by the staff of the *IRM*. If you or someone you know would like to be on our mailing list, if you have something you would like to contribute (*e.g.*, titles plus abstracts of papers in press), or if you have any suggestions to improve the newsletter, please notify the editor:

Julie Bowles
Institute for Rock Magnetism
University of Minnesota
291 Shepherd Laboratories
100 Union Street S. E.
Minneapolis, MN 55455-0128
phone: (612) 624-5274
fax: (612) 625-7502
e-mail: jbowles@umn.edu
www.irm.umn.edu

The U of M is committed to the policy that all people shall have equal access to its programs, facilities, and employment without regard to race, religion, color, sex, national origin, handicap, age, veteran status, or sexual orientation.



UNIVERSITY OF MINNESOTA